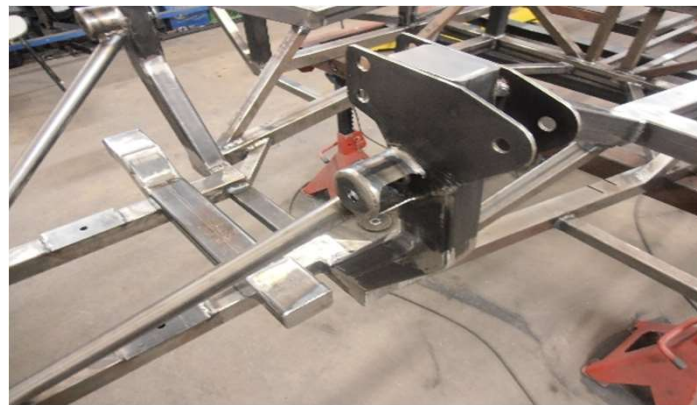


FORD GT40

CHASSIS	include	optional
P-chassis space frame	•	
W-sandblasting chassis	•	
P-panel set	•	
P-safety rollcage	•	
FRONT AXLE	include	optional
P-suspension set - 4x	•	
P-lower and upper arms - 4x - black	•	
P-steering gear - STD	•	
P-steering rod	•	
P-steering rod distances	•	
P-axle carrier - 2x - ALUMINIUM	•	
P-wheel hub - 2x	•	
P-central wheel hub - 2x		610 €
P-stabilizer set	•	
REAR AXLE	include	optional
P-lower arms - 2x - black	•	
P-towed arms - 4x - black	•	
P-axle carrier - 2x - ALUMINIUM	•	
P-wheel hub - 2x	•	
P-central wheel hub - 2x		610 €
P-stabilizer set	•	
BRAKES	include	optional
P-front-WILLWOOD-4 pis - 288mm	•	
P-rear-WILLWOOD-4 pis - 288mm	•	
P-servo power - brakes + cluth	•	
P-main brakes + cluth lines	•	
WHEELS	include	optional
P-BRM Halibrand - 7 x 15" / 9 x 15"	•	
P-BRM Halibrand - 7 x 17" / 9 x 17"		3 150 €
P-tyres - 4pcs	•	
ENGINE, GEARBOX, FUEL	include	optional
P-FORD Racing 302 cu. V8 350 hp	•	
P-gearbox UN1 - 5 speed	•	
P-cluth	•	
P-starter	•	
P-driveshafts - 2x	•	
P-alternator	•	
P-fuel tanks include FIA safety foam	•	
P-complete fuel systém (2x pumps)	•	
P-fuel tank cover - 2x	•	
EXHAUST		
P-exhaust	•	
BODY		
P-fiberglass body set	•	
P-front light - 2 pcs	•	
P-rear light - 2 pcs	•	
P-turn light - 2 pcs	•	
P-bonnet hinges set	•	
P-bonnets clips - 4x	•	
P-rear grill - 3 pcs	•	
P-locks + handles set (IN+OUT)	•	
P-door hinges set	•	
P-plate lighting	•	
P-wipers	•	
P-door seals set	•	
W+P-final painting	•	
GLASSES	include	optional
P-complete set (glasses + flexi)	•	



INTERIOR	include	optional
P-interior set - leather	•	
P-steering wheel LHD or RHD	•	
P-pedal box	•	
P-gear lever	•	
P-hand brake lever	•	
P-gauges	•	
P-switches set	•	
P-electrical wires set	•	
P-radio	•	
P-heating system	•	
COOLING	include	optional
P-complete cooling systém	•	
TOTAL COST		57 800 €



Building times:

Complete finish car (ready to ride) 28 weeks

*** time for building car be depends on workload**

Note: 2. payment with delivery is only for EU customers - outside of EU is when the package is handover to shipping company

Payment terms for final car:

1. payment - deposit with order	20%
2. payment - after body is finish	20%
3. payment - after donor car or chassis is ready	20%
4. payment - after interior is ready	20%
5. payment - panting and car is ready	20%

All prices are without VAT 21%